

# AGM CHARGING INSTRUCTIONS

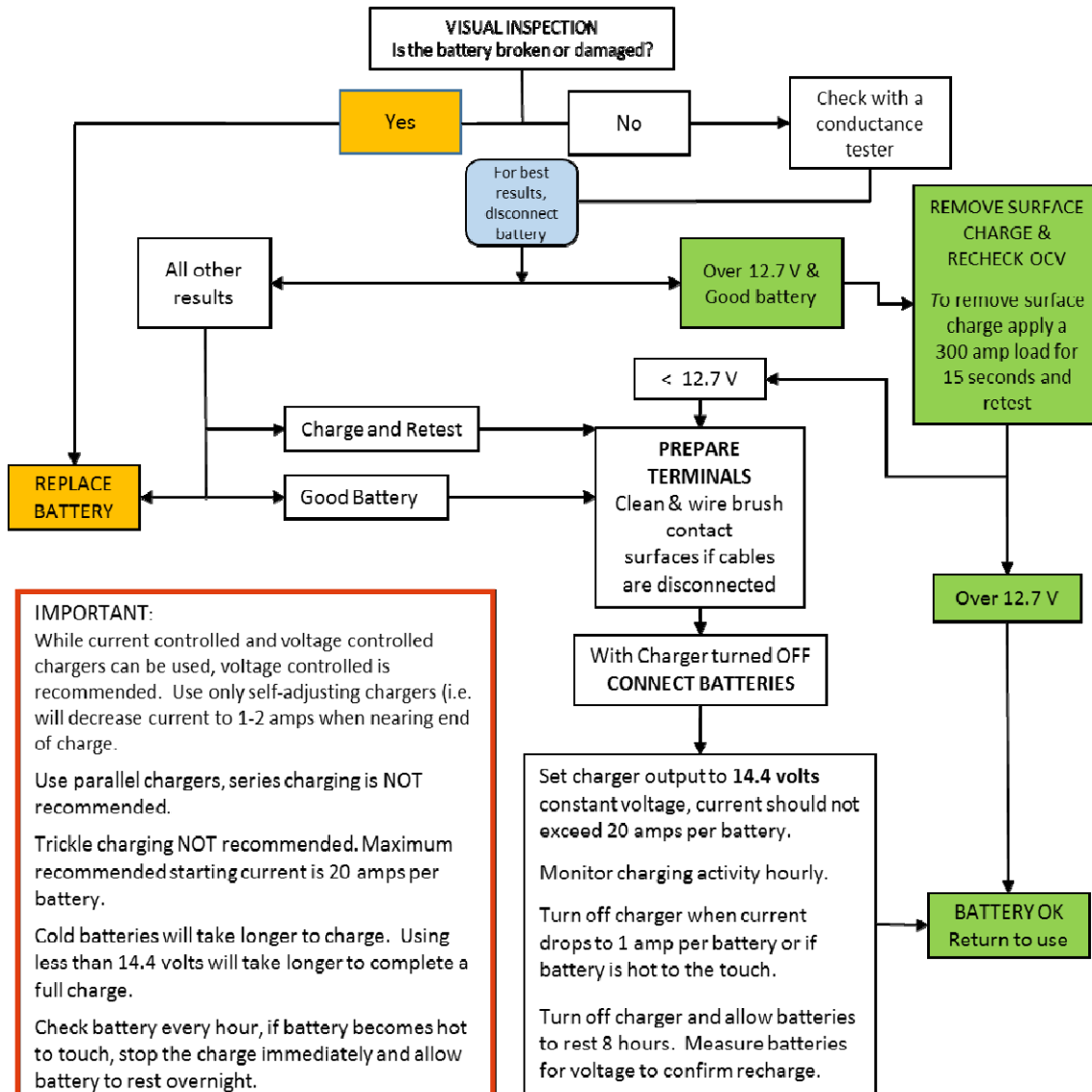


# ABSORBENT GLASS MAT BATTERIES



AGM batteries are designed and manufactured ideally for fleet vehicles that demand greater power, vibration control, longer life expectancy and are spill-proof

- Totally maintenance-free
- Electrolyte is held permanently in the glass mat separator instead of free flowing within each cell which makes this battery 100% leak-proof and spill-proof
- Significantly reduces the loss of active mass attached to the grid by maintaining pressure on the plates which results in a better battery life expectancy
- Eliminates acid stratification, a significant failure mode in flooded products
- Oxygen recombination reduces water loss
- Delivers up to 4 times more cycle life than standard starting/lighting/ignition batteries in traditional applications
- Higher charge acceptance for quicker recharge
- Lasts longer in demanding applications because it is charge-receptive and high-cycling
- Charging AGM batteries is different than charging a regular battery. Make sure there is an AGM setting on your battery charger



**IMPORTANT:**  
While current controlled and voltage controlled chargers can be used, voltage controlled is recommended. Use only self-adjusting chargers (i.e. will decrease current to 1-2 amps when nearing end of charge).  
Use parallel chargers, series charging is NOT recommended.  
Trickle charging NOT recommended. Maximum recommended starting current is 20 amps per battery.  
Cold batteries will take longer to charge. Using less than 14.4 volts will take longer to complete a full charge.  
Check battery every hour, if battery becomes hot to touch, stop the charge immediately and allow battery to rest overnight.

BATTERY TECHNOLOGY	FUNCTION	TYPICAL APPLICATIONS
Standard Flooded	<ul style="list-style-type: none"> <li>• Micro-cycling</li> <li>• Operating SOC ~ 100%</li> </ul>	<ul style="list-style-type: none"> <li>• Standard Vehicle</li> </ul>
AGM	<ul style="list-style-type: none"> <li>• Highest and deepest cycling</li> <li>• Operating SOC &gt; 60%</li> </ul>	<ul style="list-style-type: none"> <li>• Premium vehicles (highly equipped luxury car)</li> <li>• Start-Stop vehicles with higher cycle load and brake energy recuperation</li> </ul>

\*To the original purchaser. Parts only; installation not included. See your local distributor or Independent Service Centre that offers ACDelco parts for details.

# ABSORBENT GLASS MAT BATTERIES



## AUTOMOTIVE APPLICATIONS

Part Number	47AGM	48AGM	94RAGM	49AGM	34AGM	65AGM	78AGM
Reserve Capacity (min)	115	120	140	160	115	120	115
Ah <sub>20</sub>	60	70	80	92	60	70	60
CCA@0°F (-18°C)	630	760	850	900	740	750	740
CA@32°F (0°C)	750	880	1020	1080	890	900	890
Length (Inches)	9.5	10.9	12.4	13.9	10.1	11.1	10.1
Width (Inches)	6.9	6.9	6.9	6.9	6.7	7.2	6.8
Height (Inches)	7.5	7.5	7.5	7.5	7.5	7.4	7.2
Warranty (Months)	36	36	36	36 Months	36	36	36



47AGM



48AGM



94RAGM



49AGM



34AGM



65AGM



78AGM

## ELECTRIC/HYBRID APPLICATIONS

Part Number	LN1AGM	AUX12	EVLN2	ACDB24R
Reserve Capacity (min)	80	12	115	70
Ah <sub>20</sub>	50	10	60	45
CCA@0°F (-18°C)	560	155	630	325
CA@32°F (0°C)	670	185	750	390
Length (Inches)	8.1	5.9	9.5	9.2
Width (Inches)	6.9	3.5	6.9	4.8
Height (Inches)	7.5	5.1	7.5	8.8
Warranty (Months)	36	36	24	24



LN1AGM



AUX12



EVLN2



ACDB24R

## MARINE APPLICATIONS

Part Number	Reserve Capacity (min)	Ah <sub>20</sub>	CCA@0°F (-18°C)	MCA@32°F (0°C)	Length (Inches)	Width (Inches)	Height (Inches)	Warranty
M24AGM	140	80	500	600	10.2	6.9	8.8	24 Months

**DON'T FORGET!**

ROADSIDE ASSISTANCE is available to the customer if the repair is made at an active ACDelco Professional Service Centre (PSC) or ACDelco Automotive Care Expert (ACE) Program Member facility.



M24AGM