

## ACDelco Silver Chassis Spherical Bushing technology

SILVER



MS251112



MS251123/4

Spherical Bushing technology supports extended service life of control arms on some Chrysler/Dodge LX and LD RWD platforms.

- Advanced technology in spherical bushings can improve replacement without affecting NVH (noise, vibration, harshness)
- Enhanced forgings, cross-sections and and greaseable sintered metal ball optimize performance
- Made for durability under all conditions



Hardware included for complete install (MS251112)



Hardware included for complete install (MS251123/4)



**TESTED**  
to rigorous standards

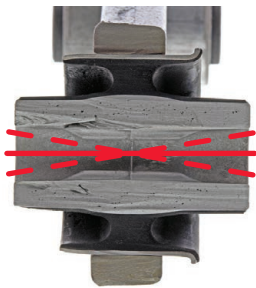


**GM-BACKED**  
limited warranty

## ACDelco Silver Chassis SILVER Spherical Bushing technology

- Due to position and placement on the vehicle, these control arms encounter dynamic fore to aft and lateral loading forces.
- The OE-style bushing is designed to be constantly under compression and exhibits limited deflection while in service.
- These combined load forces can separate the bushing from the inner sleeve. This process is accelerated by the restricted flex” inherent to the OE-style design.
- This results in the familiar ‘knock’ and torn rubber characteristic of a failed bushing, signaling replacement.

### TYPICAL FAILURE MODE



**RESTRICTED DEFLECTION**  
OE-style bushing has limited range of movement



**TORN BUSHING**  
Load forces will tear bushing from sleeve

### CONTROL ARMS FEATURE:

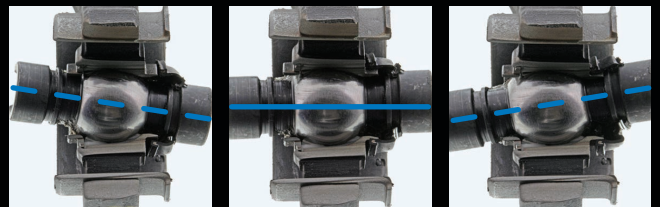
- Greasable Sintered Metal Bearings
- Application-Specific Ball Studs with Added Material
- Thicker Forged Materials
- Hardware and Pre-Installed Components for Quick Fitting



MS251112

MS251123/4

### ACDelco ADVANCED ENGINEERING



- Innovative spherical construction allows the sleeve a wider range of motion while arm is under compression. This reduces stress on the rubber portion of the bushing.
- Improved bi-directional load and wear resistance provides proven durability and extended service life.

### AVAILABLE NOW

PART NUMBER	POSITION	APPLICATION
MS25120/1	Front Lower Left/ Right Forward	2005-2010 Chrysler 300, Dodge Charger and Challenger RWD
MS25119	Front Lower Rearward	2005-2010 Chrysler 300, Dodge Charger and Challenger RWD
MS251123/4	Front Lower Left/ Right Forward	2011-2019 Chrysler 300, Dodge Charger and Challenger RWD
MS251112	Front Lower Rearward	2011-2019 Chrysler 300, Dodge Charger and Challenger RWD

Contact your ACDelco parts supplier for warranty and additional parts information.

[ACDelcoCanada.com](http://ACDelcoCanada.com)