

ACDelco

ACDelco Silver Chassis Innovative Engineering Solutions **Terrain eXtreme**

SILVER

For light and medium duty working vehicles



TESTED
to rigorous standards



GM-BACKED
limited warranty

THE ACDelco ADVANTAGE

Maximum Uptime

- Ensure peak on-the-road uptime for both solid axle and IFS vehicles.

Lower TCO

- Drive down total cost of ownership with extended maintenance cycles and superior durability.

Faster, Easier Installation

- Reduce fitting time with hardware and installation aids included in the box.

Optimum Performance

TX parts feature application-specific engineering upgrades:

- Sintered metal-on-metal bearing designs accommodate increased loads and provide extended part service life.
- Boot construction guards against contaminants by sealing ingress points.
- Enhanced forgings and improved cross-sections and bushings minimize deformation and undesired loading.



TXMS25519 – Front Upper
2008-2018 RAM 4500 & 5500



TXMS40506 – Front Upper
2005-2019 Ford F-450 SD & F-550 SD



TXMS25520 – Front Lower
2008-2018 RAM 4500 & 5500



TXMS40505 – Front Lower
2005-2019 Ford F-450 SD & F-550 SD

BALL JOINTS



TXMS501195 – Front Upper
2011-2019 Chevrolet Silverado & GMC Sierra 2500 HD / 3500 HD



TXMS501179/80 – Front Lower
2011-2019 Chevrolet Silverado & GMC Sierra 2500 HD / 3500 HD

CONTROL ARMS



TXK8848 – Front
2009-2018 – Chevrolet Express & GMC Savana 4500



TXMS40884 – Front
2015-2019 Ford Transit 150/250/350/350 HD

STABILIZER LINKS



TXMS30728 – Front
2012-2019 Nissan NV1500/2500/3500

TIE ROD ASSEMBLY

EASY TO INSTALL

TX parts are easy to install with hardware and install aids in-box, reducing total service time and cost.



Bootstaller™ makes fitting boots trouble-free where there is minimal space available



Coated Grade 12 and 12.9 installation hardware included



Installation Adapter allows for fast press-in of ball joint using standard tools

Installation Adaptor and Bootstaller™ included in-box where applicable



Sintered metal greaseable bearings provide extra endurance and durability to get more life out of parts, when compared to OE-style plastic bearings.



Sintered metal upper and lower bearings



OE-STYLE Plastic bearing

SINTERED METAL GREASEABLE BEARINGS



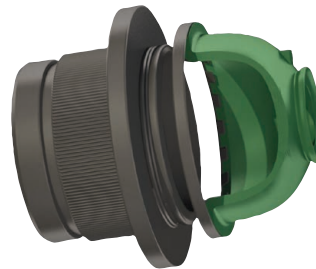
ACDelco

OE-STYLE

Control arm bushings use high-grade rubber and a solid construction which fills in voids to better withstand vibration without cracking or tearing. Knurling is added to the sleeve for added bite.

ENHANCED BUSHINGS

Boot is mechanically locked to housing, keeping grease in and contaminants out.



High strength multi-lip locking boot is designed as a permanent and superior method of protection against contamination.

HIGH STRENGTH LOCKING BOOT



ACDelco

OE-STYLE



Parts are engineered to last. Application-specific material is added into critical areas on ball joints, control arms, stabilizer links and tie rods, which reduces flex and minimizes loading to prolong life.

MORE MATERIAL

- TX PARTS ALSO FEATURE:
- Advanced coating for anti-corrosion protection
 - Exclusive high-grade grease, pre-filled
 - Easy to snap cotter pin

ACDelco Silver Chassis SILVER Innovative Engineering Solutions

LIGHT AND MEDIUM DUTY APPLICATIONS

CHEVROLET/ GMC



- CITY EXPRESS
- EXPRESS/SAVANA VANS
- SILVERADO/SIERRA 1500
- SILVERADO 1500
- SILVERADO 2500HD
- SILVERADO 3500 HD
- SUBURBAN/YUKON/TAHOE
- TOPKICK/KODIAK C4500/5500

DODGE



- RAM 1500/2500/3500/
4500/5500
- C/V
- PROMASTER 1500/2500/3500

FORD



- E-SERIES
- F-SERIES
- TRANSIT SERIES
- EXPLORER
- EXPEDITION

FREIGHTLINER/ MERCEDES- BENZ



- SPRINTER

NISSAN



- NV200
- NV1500
- NV2500
- NV3500
- TITAN XDS

STERLING TRUCK



- BULLET 45/55

Contact your ACDelco parts supplier for warranty and additional parts information.

ACDelcoCanada.com